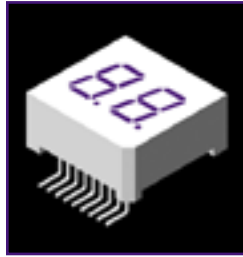


Single and Dual Digit



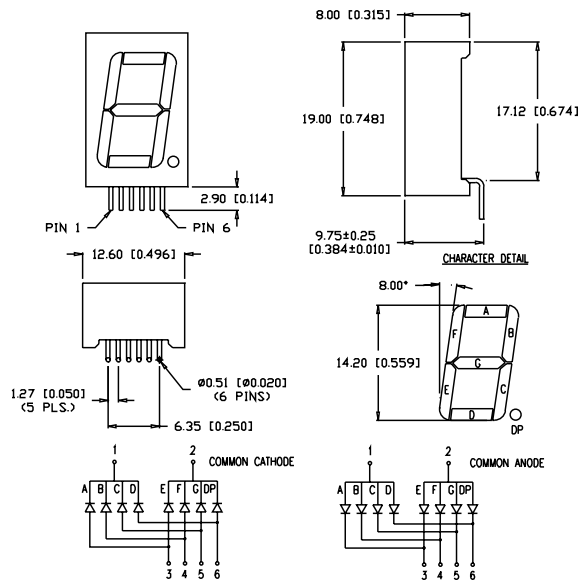
Features/Options

- ▶ Standard and high brightness chips
- ▶ Custom sizes at minimal cost
- ▶ Right angle pins eliminate expensive sockets
- ▶ Intensity grading available at chip level

Applications/Uses

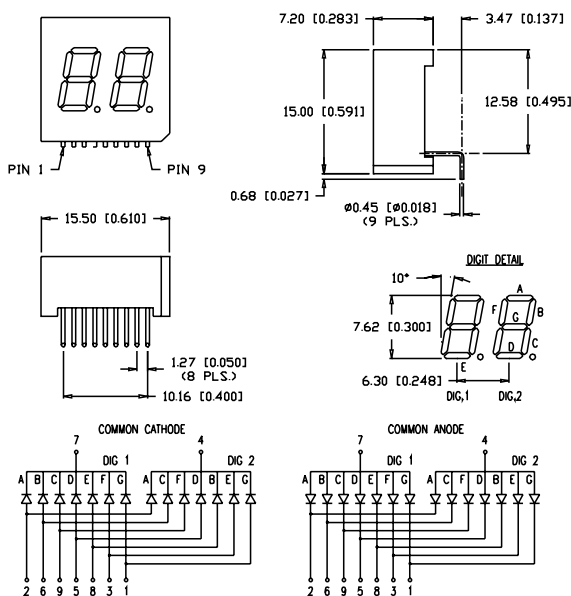
- ▶ Test instruments
- ▶ Diagnostic equipment
- ▶ Instrument and control panels
- ▶ Monitoring displays

0.56" single digit



Part Number	Wave Length (nm)	Brightness (μcd @ 10mA)	Vf (typ) 10mA	Vf (max) 10mA	Emitted Color	Polarity (column)
LDS-M512RI-RA	565	2500	2.2	2.6	Green	Anode
LDS-M514RI-RA	635	2500	2.0	2.5	Red	Anode
LDS-M516RI-RA	660	8000	1.7	2.2	Red	Anode
LDS-M512RI-RA-SUG	574	7000	2.2	2.6	Green	Anode
LDS-M514RI-RA-SI	636	15,000	2.0	2.6	Red	Anode
LDS-M517RI-RA-USB	470	6000	3.5	4.0	Blue	Anode
LDS-N512RI-RA	565	2500	2.2	2.6	Green	Cathode
LDS-N514RI-RA	635	2500	2.0	2.5	Red	Cathode
LDS-N516RI-RA	660	8000	1.7	2.2	Red	Cathode
LDS-N512RI-RA-SUG	574	7000	2.2	2.6	Green	Cathode
LDS-N514RI-RA-SI	636	15,000	2.0	2.6	Red	Cathode
LDS-N517RI-RA-USB	470	6000	3.5	4.0	Blue	Cathode

0.30" dual digit



Part Number	Wave Length (nm)	Brightness (μcd @ 10mA)	Vf (typ) 10mA	Vf (max) 10mA	Emitted Color	Polarity (column)
LDD-E302NI-RA	565	2500	2.2	2.6	Green	Anode
LDD-E304NI-RA	635	2500	2.0	2.5	Red	Anode
LDD-E306NI-RA	660	8000	1.7	2.2	Red	Anode
LDD-E302NI-RA-SUG	574	7000	2.2	2.6	Green	Anode
LDD-E304NI-RA-SI	636	15,000	2.0	2.6	Red	Anode
LDD-E307NI-RA-USB	470	6000	3.5	4.0	Blue	Anode
LDD-F302NI-RA	565	2500	2.2	2.6	Green	Cathode
LDD-F304NI-RA	635	2500	2.0	2.5	Red	Cathode
LDD-F306NI-RA	660	8000	1.7	2.2	Red	Cathode
LDD-F302NI-RA-SUG	574	7000	2.2	2.6	Green	Cathode
LDD-F304NI-RA-SI	636	15,000	2.0	2.6	Red	Cathode
LDD-F307NI-RA-USB	470	6000	3.5	4.0	Blue	Cathode



USA/Canada 1-800-278-5666
Asia +886-3-5821124



www.lumex.com



USA/Canada 1-847-359-8904
Asia +886-3-5821154

1
2
3
4
5
6
7
8
9
10
11
12
13
14
15
16
17
18
19
20
21
22
23
24
25
26
27
28
29